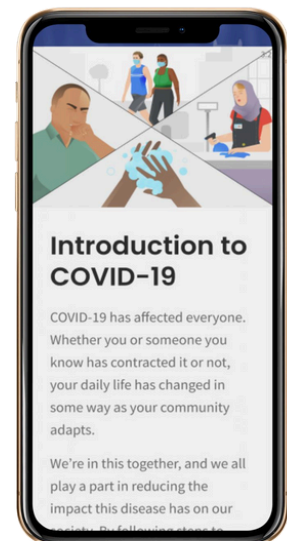


Staying Healthy in a Changing Environment

Provide employees with information to navigate the work environment through the lens of COVID-19

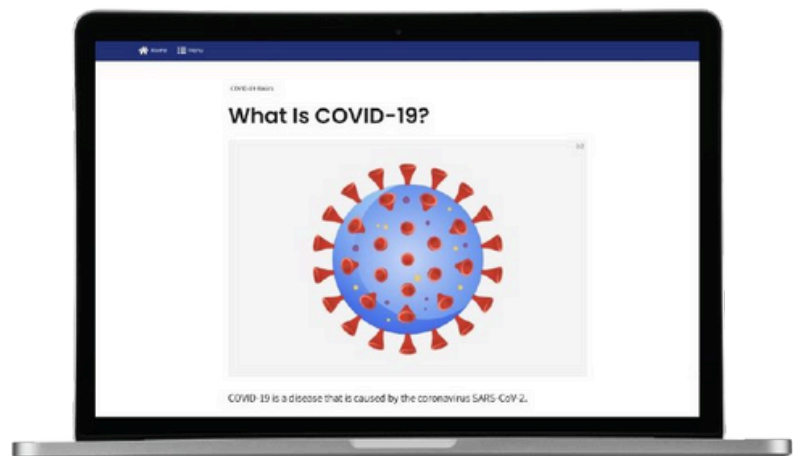
Support Employees in the New Work Environment

Staying Healthy in a Changing Environment includes information on the COVID-19 virus and vaccine, returning to the workplace, and working remotely. The course enables you to share your latest rules and procedures with your workforce, and provides employees with practical guidance on how to protect their physical health, support their mental well-being, and work effectively onsite or offsite.

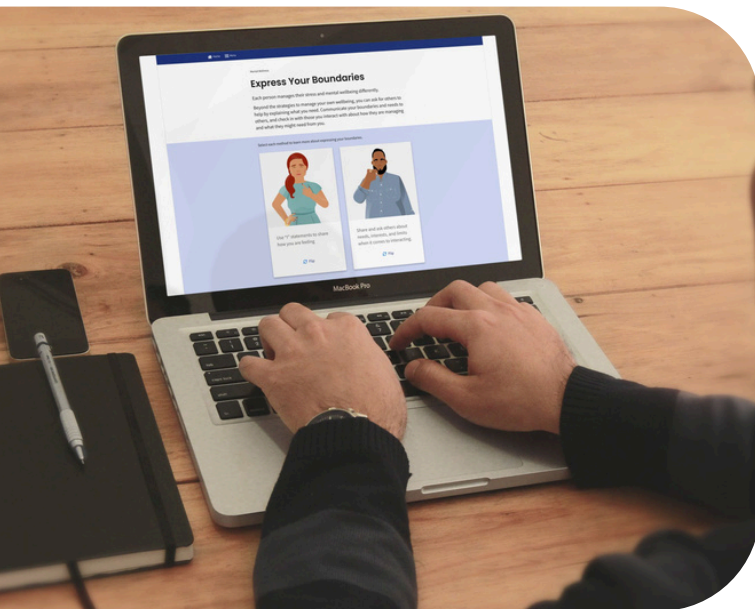


Topics Include:

- About the COVID virus
- Safety best practices
- Stress & mental well-being
- Returning to the workplace
- Working remotely



SOLUTION DETAILS & BENEFITS



Configurable

Build a branded experience with standard and premium configurations



Mobile First

Employees can take the course wherever, whenever



Analytics and Reporting

Track employee progress, completion data through EVERFI's administrative dashboard



Streamlined Administration

Automatically assign courses and send email reminders to your workforce

Tailored to Your Organization's Unique Needs

Multiple points of customization, including:

- Client logo
- Welcome page & video
- Custom content pages
- Policy acknowledgement
- Closing page & video
- Additional course modifications available to add or remove content*

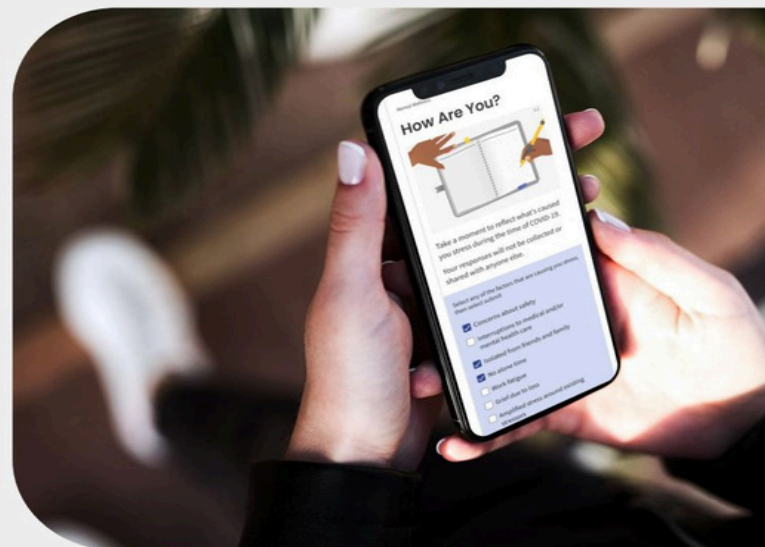
Flexible Content Assignment

Flexible module assignment enables administrators to identify and share the course modules that are most relevant to their staff:

- Introduction
- COVID Basics
- Mental Wellness
- Working in this New Environment
- Returning to the Workplace
- Conclusion

Course Details

- **Format:** Online training with interactive scenarios and videos
- **Audience:** All employees
- **Seat Time:** 25 minutes
- **Languages:** English, Spanish (Latin American), French (Canadian), Portuguese (Brazilian), Chinese (Simplified), Chinese (Traditional)



*Denotes additional cost

EVERFI, LLC is the leading education technology company that provides real-world education to learners of all ages through innovative and scalable digital learning.

Learn more at everfi.com/return-to-the-workplace